



Industry 4.0 Career Pathways Program

Prepare your students for success



LJ CREATE™
Learning for life

LJ Create's Industry 4.0 Career Pathways Program is a program designed to provide students with an introduction to Industry 4.0 concepts and applications across multiple industry sectors.

This program will provide students with the expertise they need to succeed at college, in industrial skills programs, and industry certification courses.



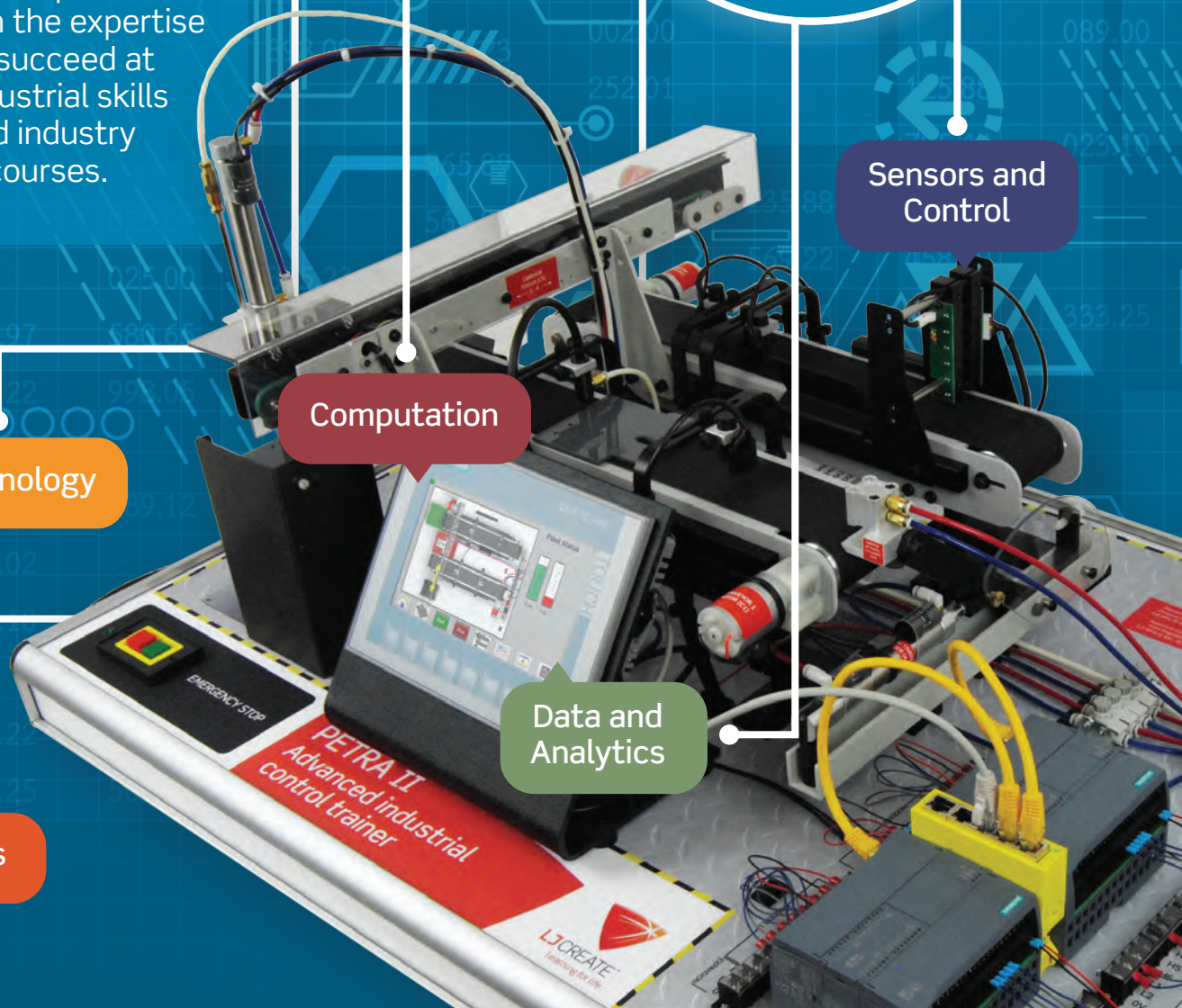
Sensors and Control

Computation

Energy Technology

Data and Analytics

Materials





Industry 4.0 Career Pathways Program

Prepare your students for success



MANUFACTURING

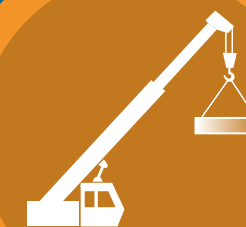
- Manufacturing Technology
- Machine Tools
- Rapid Manufacturing
- Industrial Robotics

Flexible - 45 hour block structure



AGRICULTURE

- Agricultural Technology
- Agricultural Science
- Natural Resources



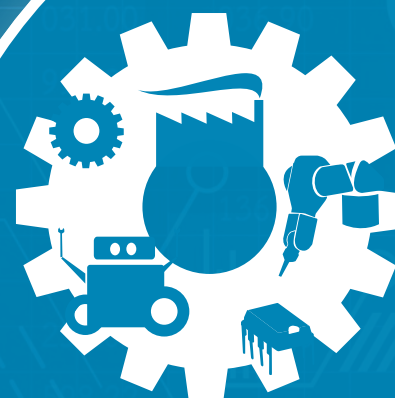
CONSTRUCTION

- Construction Technology
- Building Technology
- Electronic Systems
- Electrical Technology
- Energy Technology



LOGISTICS & SUPPLY CHAIN

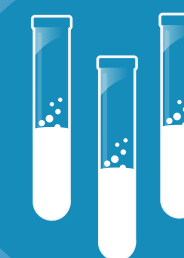
- Mobile Robotics
- Introduction to Logistics and Warehousing
- Industrial Control



INDUSTRY 4.0

CORE CURRICULUM

Introduction to Industry 4.0
Design Thinking
Safety and Tool Use
Electrical Principles
Mechatronics
Data and Measurement



HEALTH & BIOMEDICAL

- Biomedical Technology
- Biochemistry and Food
- Health Science
- Human Health



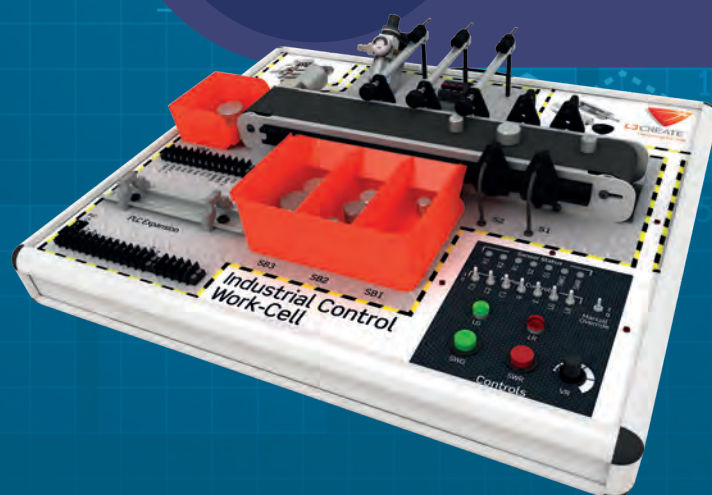
INFORMATION TECHNOLOGY

- Computer Science
- Communications Technology
- Programming Robots
- Working with IT



TRANSPORTATION

- Transportation Technology
- Introduction to Automotive Systems
- Hybrid and Electric Vehicles



REQUIRED EQUIPMENT

Course	Equipment
Introduction to Industry 4.0 - Core	220-01 - Engineering Construction Kit
	140-10 - Basic Electricity Trainer
	278-01 - Fluid Power Student Resource Pack
	511-08 - Measurement Kit
	520-00 - Datalogging Kit
	511-01 - Physics Apparatus Kit
Construction	121-01 - Structures and Materials Student Resource Pack
	122-01 - Green Energy in Buildings Trainer
	450-00 - Electronics Circuits Trainer Teaching Set
	140-10 - Basic Electricity Trainer
	100-02 - Sustainable Energy Production Student Resource Pack
Health and Biomedical	220-01 - Engineering Construction Kit
	510-03 - Human Biology Kit
	520-00 - Datalogging Kit
	510-01 - Biology Apparatus Kit
Information Technology	220-01 - Engineering Construction Kit
	250-01 - Educational Robotics Invention Kit (ERIK)
	200-01 - Electronic Communications Trainer
Manufacturing	350-10 - Mechanical Maintenance (Molder Assembly Kit)
	506-50 - Machine Tools Class Pack
	220-01 - Engineering Construction Kit
	3D Printer
Logistics and Supply Chain	220-01 - Engineering Construction Kit
	290-01 - Industrial Control Trainer
Transportation	220-01 - Engineering Construction Kit
	752-01 - Displays and Accessories Systems Panel Trainer
Agriculture	220-01 - Engineering Construction Kit
	510-01 - Biology Apparatus Kit
	513-01 - Earth Science Apparatus Kit



If you'd like a call or visit:

tel: 1-800-237-3482, email: info@ljcreate.com

ljcreate.com